



Alkym[®]



MRO/M&E and Asset Management Software



Improving the performance of operations through agile and flexible solutions



Alkym[®]

Specifically designed to improve Operations, Alkym is one of the worlds leading solutions available in the market today.



Robust integrations are necessary to cover areas are more relevant to Finance, HR and Payroll providing the customer a full suite and not only a specific solution.

Dry Docking | Repair and Overhaul

Key Differentiators

- Value proposition

 - Aircraft/Vessel turnaround time reduced significantly
 - Web enabled allowing for information to be accessed remotely
 - Minimal Inventory holding costs
 - Customer billing time reduced
 - Compliance with Industry Regulations
 - Revenue leakages reduced by effectively tracking expenses
- Fastest return on investment (ROI)
 - Industry-leading management dashboards, KPI's and reporting
 - Completely integrated Solution software solution
 - Powerful data querying, reporting and data mining tools
 - Developed and supported by Enterprise Software specialists
 - Rapid and effective software implementation
 - Highly personalized customer support service

Asset Operator

- Value proposition
- Life tracking of the Asset and their components
 - Customisable user reports complying with with International and National Requirements
 - Instant reliability reports generation to effectively monitor performance
 - Operational & Process improvement
 - Integrated processes across the organisation resulting in operational efficiency
 - Friendly & Intuitive system interface

Alkym is a completely integrated software solution which includes, among others, the following modules and tools:

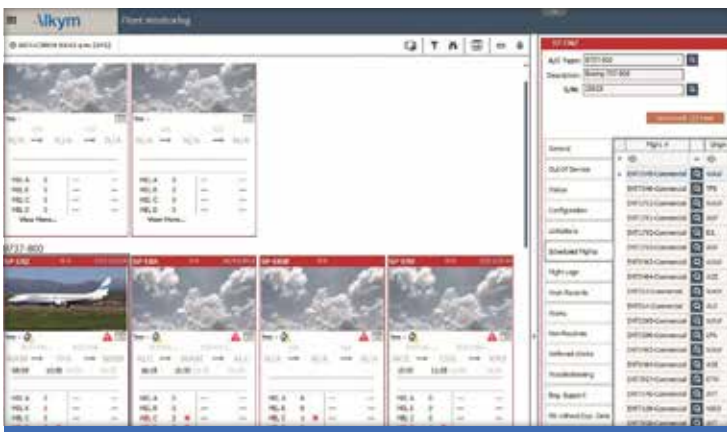
A

- Engineering • Planning • Maintenance Control • Technical Library • Quality Assurance
- Purchasing & Repairs • MRO • Inventory • Receiving & Shipping • SMS • Sales • DMS
- Reliability • M-Applications • Human Resources • Advanced Planning Optimisation
- System Configuration • M-Transfer • Workshop • Training Management • Fleet Monitoring



03. Alkym Latest Features

- Decision Support tools that deliver Industry-leading fleet monitoring capabilities
 - Analytics & Executive Dashboards
 - Operation-specific KPIs with tailored alerting and reporting
 - Decision support tools work across mobile and desktop devices and interfaces
- Best in Class Mobile Maintenance Application
 - Streamlined to maximize technical resources efficiency and effectiveness
 - Provides Ubiquitous Ease of Use
 - > Delivers the same streamlined user experience across touch screen and desktop devices regardless of the operating system
- Advanced Optimization Tools for Line, Base, MRO Operations & Dry Docking
 - Capacity planning and day of operation optimization including Alkym Slot Manager
 - Drag and drop work package assignment
 - Resource levelling based on production and materials availability
- Internal Instant Messenger
- Real-Time Fleet Status Monitoring
- Enhanced Complex Interval Management
- Advanced Product (P/N) Restriction Capabilities
- Material Management Wizards for MRO
- New Mobile Maintenance App Features



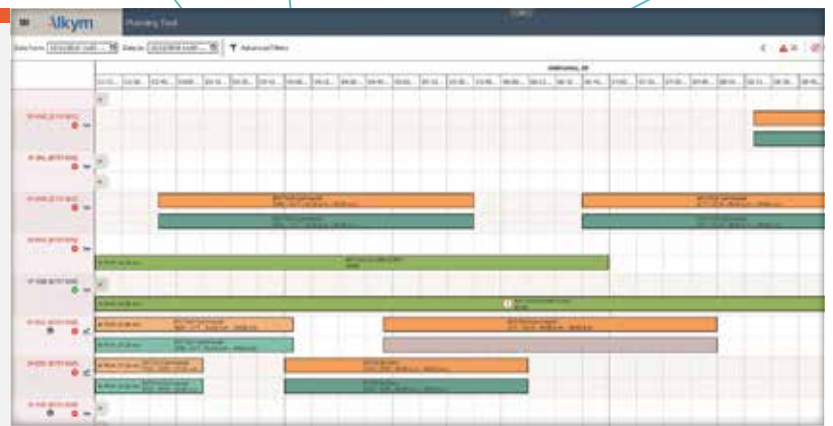
Fleet Monitoring

- Entire Fleet Real-Time Status Control
- Most relevant Data Control with Images & Icons
- Increased Aircraft/Vessel Dispatch Reliability
- Indications for Operating Conditions such as CAT I/II/III, RVSM, ETOPS, etc.



Advanced Planning Optimisation


- Available slots for Maintenance Access
- Fully Integrated Solution for Flight Ops
- Maintenance Events Creation
- Scheduling Conflict Detection & Resolution
- Possible Aircraft Switching Detection
- Ground Time Recognition between Flights



04.



A more advanced MRO | M&E Solution



Web based UI

More intuitive and easy to use

- Adaptive screen
- Improved navigation and searches
- Renewed productivity tools

Dashboards Management and Customization

Enhanced End User Reporting

Provides the user with greater customization capabilities in the report content and layout.



Advanced Mobile Applications

- Maintenance Mobile
- Document Management Mobile



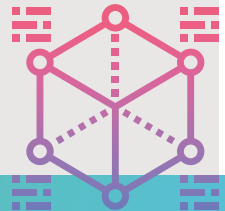
05.

New Characteristics



Increased Compatibility

- N-layered architecture
- Web front-end
- SQL Server 2017 compatibility
- Windows Server 2016 compatibility



Easy deployments and administration



- Simplified system updates
- Cloud deployments Support - Azure, AWS (Amazon Web Services), etc.

Enterprise and scalable

- Reliable and fast information processing
- Improved exceptions handling, tracking, and monitoring

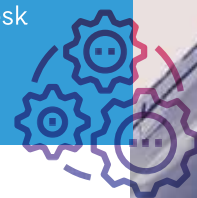
Improved Document Management capabilities

- Intelligent metadata
- AI-Powered Information Management
- File Streaming Support (pdf and videos)



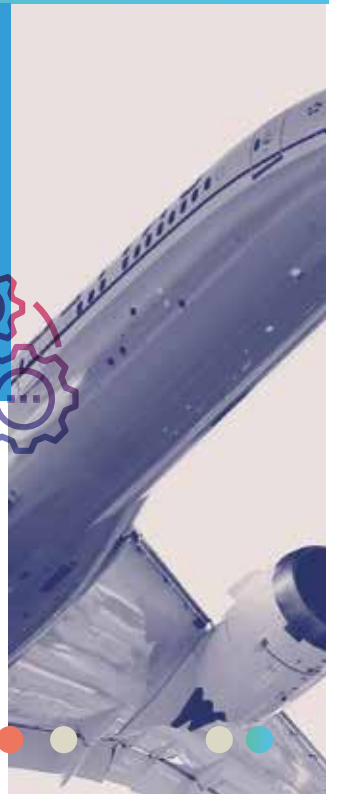
Online customer center

- Online Documentation Center
- Enhanced Helpdesk System



Electronic Techlog Integration

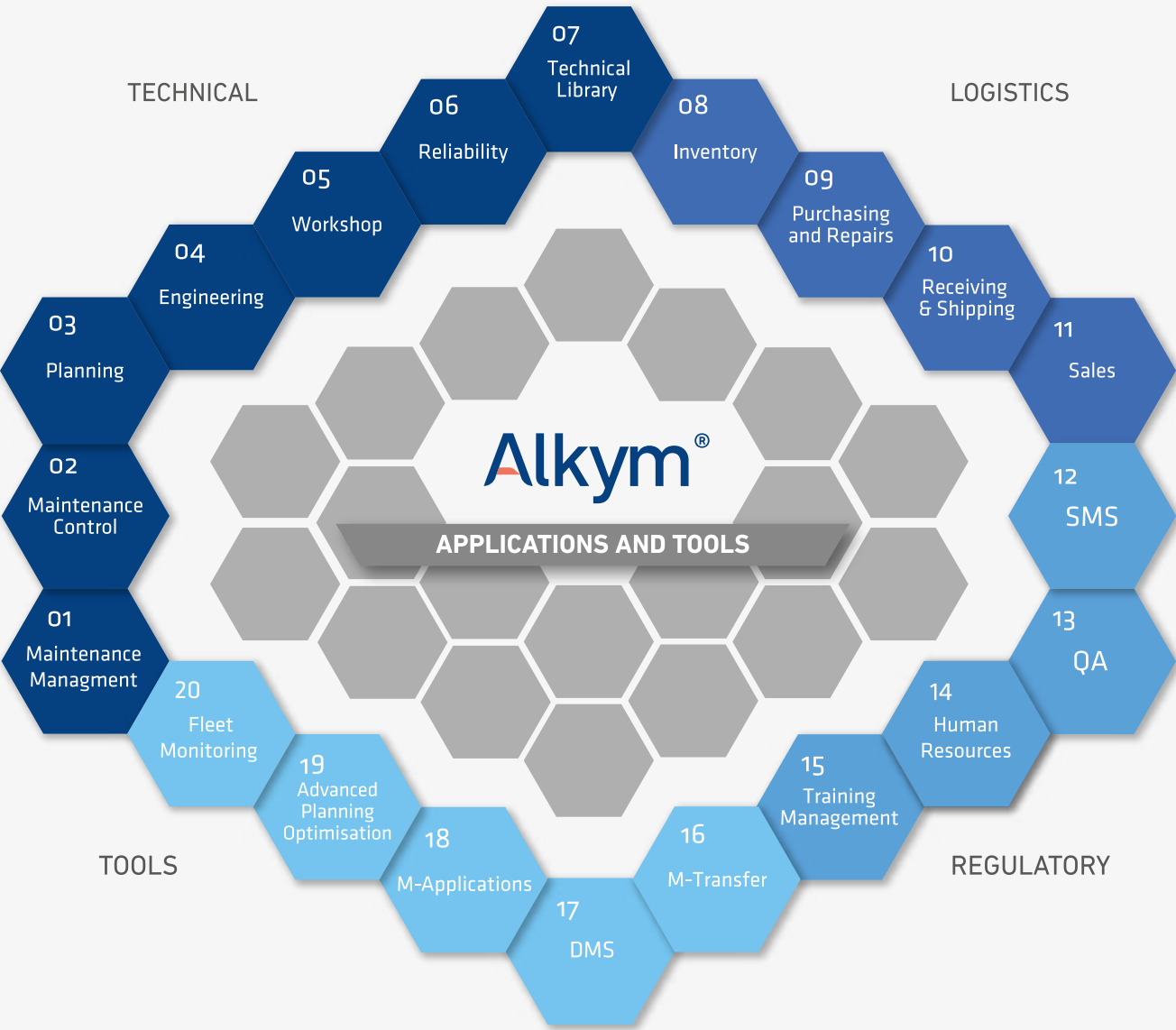
- Fault Database Analysis
- Electronic Forms
- Document Management
- Operational Analysis



06.

General Features

- Easy integration with legacy systems
 - Windows & Web applications
 - Tight integration of modules
 - Friendly, intuitive and customizable User Interfaces
- Modern, robust and reliable
 - Multicompany support
 - Reports and queries flexibility
 - End User Configuration applied to Users Interface, Reports, Queries and Dashboards



07.

Applications and Tools

Maintenance Control

- Asset Utilization Records
- Components Control
- Deferred maintenance Items
- Technical Defect Management
- Delays & Cancellations
- Works Accomplishment
- Work Progress Control

Planning

- Maintenance Planning
- Asset Work Scopes
- Works Expiration Control
- Maintenance Forecasting
- Material Previsions
- Technical Records
- Automatic creation of WO

Engineering

- Component Work Scopes
- Control of Intervals with tolerances
- P/N Applicability & Interchangeability
- Equalized Plans
- Maintenance Program Management
- Modification Control
- Supplier Capabilities
- MEL Administration
- ETOPS Management
- Component's Repair Reports
- Engine Reports
- Damages/Repair Mapping

Reliability

- Technical Defect Analysis
- Recurrent Defect Monitoring
- Critical Defect Monitoring
- Trends and long-term Reports
- Aircraft Dispatch Reliability
- System & Component Reliability
- Delays & Cancellations
- Reliability Report Wizard

Purchasing & Repairs

- Purchasing Management
- Repairs Management
- Loan & Exchange Control
- Suppliers Administration
- Purchasing and Repair Warranties
- Blanket Orders Administration
- Material Acquisition Management

Workshop

- Quotations Management
- Customizable WS Tasks Structure (Work Scopes)
- WS Work Order Management
- Labour Cost / Charge Management and Recording
- Work Progress Dashboard
- Time and Attendance Control
- Invoice Management Sales Module
- Sales & Service Orders Administration
- Customer Requirements Management
- General Ledger Account Codes
- General Ledger
- Cash Flow Monitoring
- Customers administration
- Prices Administration
- Budget Control
- Costs, Charges & Profit Analysis

Human Resources

- Employee Development
- Performance Appraisals
- Licenses & Qualifications Administration
- Recruitment
- Time & Attendance
- Labor Costing

Training Management

- Training Program Management
- Recurrent Training Management
- Licenses, Jobs and stamp management

Quality Assurance

- Business Process Mapping
- Organizational Indicators
- Audit Program Management
- Non-conformities Tracking
- Actions Management
- Document Management

Inventory

- Warehouse Management
- Automatic Provisioning
- Material Stock Adjustments
- Material Expirations Control
- Stock Valorization
- Stock Takes
- Return of the core Control
- Material Stock Control
- Materials Planning
- Material Tracking
- Kits Management

Receiving & Shipping

- Material Receiving
- Material Technical Inspections
- Component Documentation Storage & Control
- Material Rejections
- Material Shipping
- Component Warranties

Technical Library

- Tech Pub Request
- Web subscription Management
- Tech Pub Administration
- Publication Revision
- Copies Control

System Configuration

- System & User Events Log
- System Parameterization
- Interface Customization
- Operations & Data Audit
- Security Management
- Processes Configuration
- Notification Services Configuration
- Digital Documents Storage
- Permission's Manager

Safety Management

- Policies and Objectives
- Risk Management
- Safety Assurance
- Promotion of Safety
- Mobile/web-enabled registering of issues
- SMS explorers

MRO

- Production Planning
- Complete Resource Planning
- Shift Cycle Management
- Resource Optimization
- Contract Management
- From Quotation to Invoice
- Customer Defect Approval

COMMUNICATION APPLICATIONS & ADD-INS

M-Applications

- Labor Tracking
- Material Availability
- Material Requests
- Component Installations & Removals
- Non-Routines Record
- Digital Documents Access
- Troubleshooting Actions Tracking

M-Transfer

- Massive Data Loading
- Batch Processing

DMS

- Document Life Cycle Management
- Documents storage
- Documents relationship management
- Workflows & Notifications
- Document Searching

TOOLS

Fleet Monitoring

- Entire Fleet Real-Time Status Control
- Most relevant Asset Data Control with Images & Icons
- Increased Asset Dispatch Reliability
- Indications for Operating Conditions such as CAT I/II/III, RVSM, ETOPS, etc.

Advanced Planning Optimisation

- Available slots for Maintenance Access
- Fully Integrated Solution for Flight Ops
- Maintenance Events Creation
- Scheduling Conflict Detection & Resolution
- Possible Aircraft Switching Detection
- Ground Time Recognition between Flights



08. Accelerating return on investments

Alkym Implementation Services

Seabury Solutions applies a unique implementation methodology based on the best industry and project management practices. Software implementations are carried out by highly-qualified professional teams which consist of engineers, processes analysts, and IT specialists who assure a successful implementation project. Thanks to this methodology, Seabury Solutions have constantly delivered to over 90 organizations the quickest on site implementation process in the market. Even though every project is different, and times might vary, Alkym assures the shortest implementation times in the industry.



Customer Support Services

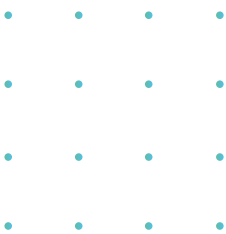
After the implementation of Alkym, Seabury Solutions ensures a Support Services that goes beyond any traditional support, maximizing the value of customer's investment and providing a strategic service relationship focused on a long-term success. Customized solutions, proactive support, software updates, system performance analysis, and personalized assistance help customers better leverage their existing resources and deliver more value to their business.

MORE INFORMATION

To find out more about Alkym or another specific solution for your industry, please contact Seabury Solutions directly or via one of our representatives. For further information, visit our web site.



www.seaburysolutions.com - mkt@seaburysolutions.com



09.

About Seabury Solutions

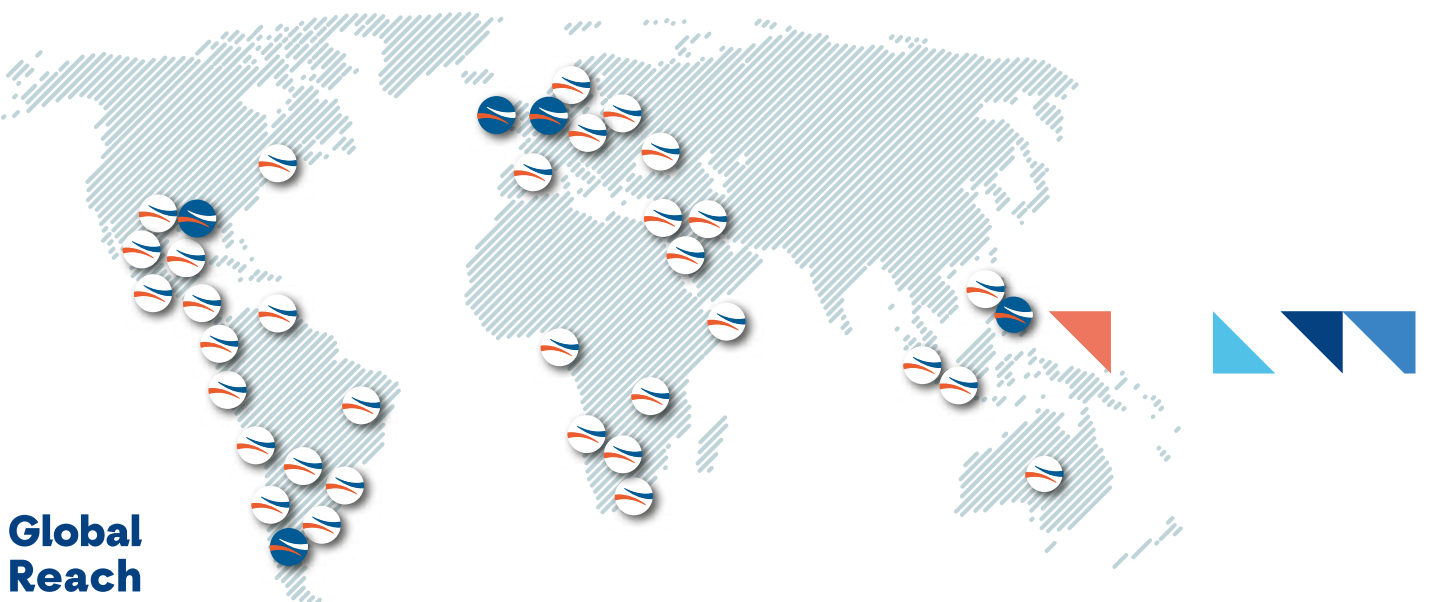
Seabury Solutions is a leading global software development company. Established in 2002, it forms part of Seabury Capital. Seabury Solutions has built its reputation in the market by delivering world class IT solutions from the smallest operator to the largest across the world. With decades' of expertise in-house, Seabury Solutions have leveraged this knowledge into a suite of products that enhance the decision making process for Airlines, MROs, Dry Docking, Ships, Railways, Power Plants, Regulators & Defence Organisations.

About Seabury Capital

Seabury Capital operates a number of speciality finance, investment banking, technology and software companies with a core focus anchored in Aviation, Aerospace & Defence, Maritime, and financial services/technology.

SEABURY[®]
Solutions

Your Digital Transformation Partner



OUR MAIN VALUES

Specialization / Innovation / Compromise / Flexibility / Quality

www.seaburysolutions.com - mkt@seaburysolutions.com



► Our Offices

AMERICAS

New York | USA
Tel: +1 612 263 6953

Ottawa | Canada
Tel: +1 613 250 8151

Summit, New Jersey | USA
Tel: +1 908 376 1505

Córdoba | Argentina
Tel: +54 351 700 0206

EUROPE

Amsterdam | Netherlands
Tel: +31 615 85 6942

Shannon | Ireland
Tel: +353 86 062131

Berlin | Germany
Tel: +49 307 2621 1922

ASIA

Manila | Philippines
Tel: +632 790 0271

Seoul | Korea
Tel: +82 10 9327 6847

OCEANIA

Melbourne | Australia
Tel: +61 046 8494448

AFRICA

Nairobi | Kenya
Tel: +254 720 802075